

SuperYachtWorld

The international magazine for superyachts of distinction

THIS MONTH

Relaxing aboard *Lady Britt*
The very best of Russian art
Carpe Diem: Trinity's latest gem
Branson's stellar plans
Fabergé: an icon reborn
What does a watchmaker do?



Stars of MONACO

The new yachts set to steal the show



Monaco Top 10 Show Debuts

For a newly launched yacht, Monaco is the only place to be seen this season. There's a huge range of debutants at this year's show, and we've picked our Top 10 must-sees Frances & Michael Howarth



Her SLICK exterior styling and interior design are inspired by the world of AUTOMOBILES

NATALY Benetti Area: E01

What is it? The first Benetti to feature a near-plumb bow. The superstructure shape is new, with slick exterior styling and interior design inspired by the world of automobiles.

Why is it so special? Many of her features are firsts from this yard. *Nataly's* hull design, created by Benetti engineering after tests at the Marin Institute in the Netherlands, has excellent seakeeping characteristics and she performs even in rough water. She was built without a bulb to improve speed and fuel consumption.

Exterior styling and interior design from the same studio add a satisfying continuity throughout the yacht. The décor is modern and restrained yet elegant, with wood and natural stone on floors, walls and furniture and oak decks.

Look out for: The floor-to-ceiling windows in the main salon, and anchors hidden behind hatches in the hull that are practically invisible.

Would appeal to: Yachtsmen seeking a boat with a modern look and clean lines.

Data Year: 2011. LOA: 65.0m. Range: 5,000nm @ 12 knots. Exterior/interior: Redman Whiteley Dixon. Guests: 14. Cabins: 7. Crew: 9. Contact: Benetti. Website: www.benettiyachts.it

SEVEN SEAS

Oceanco Area: R01

What is it? A custom 86-metre in steel and aluminium, she has an array of never-before-seen features specified by her owner. Excitement has been building around this yacht since her delivery in November 2010 and she is certain to be popular at Monaco.

Why is it so special? The main salon has a projection system with a five-metre screen, and an area of 250

square metres for hosting dinners and black-tie galas.

Look out for: The infinity pool aft, with a projector to throw images and films onto a glass wall.

Would appeal to: Owners looking for a boat of serious size, who plan to use it for lots of entertaining.

Data Year: 2011. **LOA:** 86.0m. **Range:** 3,200nm @ 12 knots. **Exterior:** Nuvolari & Lenard. **Interior:** Nuvolari & Lenard/Molly Isaksen Interiors. **Guests:** 12. **Cabins:** 7. **Crew:** 23. **Contact:** Oceanco. **Website:** www.oceancoyacht.com



HERMITAGE

Lürssen Area: tbc

What is it? A pedigree superyacht from a premier yacht builder, with an Espen Øino hull.

Why is it so special? Much of the work that goes into a yacht like this is not seen by guests, but the effects are felt on board. From air-con by Heinen & Hopman to steering gear by Rolls Royce, her quality is sublime.

Look out for: The two Royal tenders, including a limousine-style 8.1-metre.

Would appeal to: Quality lovers, for whom only the very best will suffice.

Data Year: 2011. **LOA:** 68.7m **Range:** 5,000nm @ 12 knots. **Exterior:** Espen Øino International. **Interior:** Andrew Winch Designs. **Guests:** 12. **Cabins:** 7. **Crew:** 24. **Contact:** Lürssen Yachts. **Website:** www.lurssen.com



*The modern art adds a
TREMENDOUS sense of
ENERGY and FUN to this yacht*



SNOWBIRD
Hakvoort Area: N18

What is it? *Snowbird* began her build as *Pretty Woman* before being resold to her current owner, whose son restyled her interior.

Why is it so special? The owners want *Snowbird* to be known as "the art boat", and it is a fitting name for a yacht with such a magnificent collection of modern works on board. They add a tremendous sense of energy and fun to this superyacht.

Look out for: With so much spectacular artwork on board, it is almost impossible to pick out one particular piece, but we like the 1965 colour offset lithograph 'Shipboard Girl', by Roy Lichtenstein, which sets the

tone for the overall look. There is also an eye-catching vintage Evinrude outboard motor dating from the 1930s, polished and placed on a stand centre stage in the sky lounge.

Would appeal to: Evidently, this is a superyacht for an art lover, but it would also suit a gourmet as there is a two-star Michelin chef working on board. Sun-worshippers, too, are well catered for, with a sundeck including a bar with built-in barbecue, and a hot-tub with sunpads, a bridge deck seating area with spectacular views, and a beach club with bar service.

Data Year: 2011. LOA: 39.0m. Range: 3,800nm @ 10.5 knots. Exterior: Cor D. Rover. Interior: David Ostrander. Guests: 12. Cabins: 5. Crew: 6. Contact: Hakvoort Shipyards. Website: www.hakvoort.com



DARLINGS DANAMA

CRN Area: tbc

What is it? An elegant and timeless yacht with an elongated, streamlined profile and cream-coloured hull that add a subtly different touch. She has exciting features including a transom that folds down as a beach club and an art deco, French-designed interior.

Why is it so special? While the basic hull might be the same as others from the series, the interior décor is very different, demonstrating the owner's input. Inside, there's an Art Deco theme and huge windows. A special feature is the owner's suite terrace.

Look out for: The circular patterns of the interior: they're designed to create a visual flow through areas and to make her look larger.

Would appeal to: An owner who wants a superyacht built on the proven popular 60-metre platform that makes resale easier.

Data Year: 2011. LOA: 60.0m. Range: 3,000nm @ 14 knots. Exterior: Zuccon International Project. Interior: Alexandre & Cristina Negoescu. Guests: 12. Cabins: 6. Crew: 14. Contact: CRN. Website: www.crn-yacht.com



GALILEO

Vitruvius Yachts/Perini Navi Area: T08

What is it? The latest and most exciting design from Vitruvius Yachts, *Galileo* was built at the Picchiotti Perini yard in Italy. Designed for remote Arctic and Antarctic exploration, she is a fine example of a blue-water explorer yacht.

Why is it so special? With her signature Vitruvius lines, she is sleekly proportioned, instantly recognisable and, with her distinctive steel blue hull, strikingly stylish. The bridge deck, with an elegant sundeck and

comfortable lounge area, is particularly eye-catching. Like the first in this series, she is sure to prove a real star of the Monaco show.

Look out for: The sundeck, with a diving platform for easy access to the sea.

Would appeal to: Anyone with a yearning for adventure and a desire to conquer challenging destinations.

Data Year: 2011. LOA: 55.2m. Range: 9,000 nm @ 11 knots. Exterior: Philippe Briand/Vitruvius Yachts. Interior: Perini Navi. Guests: 10. Cabins: 5. Crew: 11. Contact: Vitruvius Yachts/Perini Navi. Websites: www.vitruviusyachts.com www.perininavi.it



Giuliano Sargentini by courtesy of Perini Navi



YOGI

Proteksan Turquoise/Burgess Area: N06

What is it? A 60-metre expedition style yacht that is very different from previous offerings from Proteksan. Balinese and Asian design is the inspiration for the interior, resulting in a clean, contemporary and comfortable look with lots of pale natural fabrics and light wood. Co-exhibited with Burgess Yachts.

Why is it so special? The enormous amount of glazing, with huge windows and portholes in the hull and superstructure. Inside, the result is a real inside-outside feel. This is a yacht designed for entertaining

and charter with two beach clubs, pool, large hot-tub, plenty of places to relax and lots of dining areas.

Look out for: The large swimming pool on the main deck aft with a glass overflow and glazed panel in the bottom to illuminate the beach club below.

Would appeal to: An owner who wants a yacht with plenty of space, light and air.

Data Year: 2011. LOA: 60.2m. Range: 5,000nm @ 12 knots. Exterior: Proteksan Turquoise and Jean Guy Verges. Interior: Jean Guy Verges. Guests: 12. Cabins: 6. Crew: 15. Contact: Proteksan Turquoise/Burgess Yachts. Websites: www.proteksan-turquoise.com www.burgessyachts.com

SHOOTING STAR

Danish Yachts Area: N19

What is it? A fast cruising yacht designed by Espen Øino. She is built of composite carbon fibre, so is strong but with significant weight savings. The hull design, tested to speeds of 65 knots, ensures she can drive fast without discomfort for guests. She is currently for sale through YCO for €18.5 million.

Why is it so special? The interior is light and bright with high-gloss maple, pale fabrics and an understated, modernist feel. We like the unusual curves and angles, textures and layers, and the attention to deckheads as well as bulkheads.

Look out for: A opening main salon roof, which makes dining under the stars a reality.

Would appeal to: Those seeking a speed machine whose superb insulation ensures noise is not a problem. And the eco-conscious speed-freak: she was designed to run economically.

Data Year: 2011. LOA: 38.0m. Range: 571nm @ 26.5 knots. Exterior: Espen Øino. Interior: Art-Line. Guests: 8. Cabins: 4. Crew: 6. Contact: Danish Yachts/YCO. Websites: www.danishyachts.com www.ycoyacht.com



QUINTA ESSENTIA

Heesen Area: N05

What is it? Heesen's biggest-ever yacht, packing the most power, and full of engaging features, not least of which is the metallic red hull.

Why is it so special? The yacht – project managed by, and being shown by, Nakhimov Yachts, through whom she charters – has glazed bulwarks for fabulous views.

Look out for: The main deck swimming pool with a waterfall that cascades down from the deck above,

while inside, the vast owner's stateroom, which echoes a silver theme and features curved balconies. Look out also for the 'see-through' sides of the bridge deck.

Would appeal to: An owner who wants something unique from a yard at the top of its game.

Data Year: 2011. LOA: 55.0m. Range: 3,200nm @ 12 knots. Exterior: Omega Architects. Interior: Ken Freivokh Design/Reverberi Interior Design. Guests: 10. Cabins: 5. Crew: 11. Contact: Heesen Yachts/ Nakhimov Yachts. Websites: www.heesenyachts.nl www.nakhimov.com



IMAGINE

Amels Area: T06

What is it? The latest in Amels' semi-custom series, the 212 is a high-volume yacht with a soft-riding hull, graceful gull-wing mast arch and sleek sheerline. The interior design is understated, with rare and exotic woods such as eucalyptus and jatoba used alongside different stones and marble to great effect.

Why is it so special? This is the first 212 ever to be seen at a yacht show. Delivered and launched early and

with a snagging list of just five items (two of which were solved within a day), this is one special yacht.

Look out for: Rare Beatles and John Lennon memorabilia used as decorative art on board, including limited-edition 24-carat gold records on the bulkheads.

Would appeal to: Owners who want a proven hull form in double-quick time.

Data Year: 2011. LOA: 65.5m. Range: 5,000nm @ 13 knots. Exterior: Tim Heywood. Interior: Andrew Winch. Guests: 14. Cabins: 7. Crew: 18. Contact: Amels. Website: www.amels-holland.com

Marc Paris

Monaco 10 More Great Show Debuts

BOARDWALK

Westport Area: T12

The company's new 50-metre flagship is this semi-custom yacht, which met every objective of the shipyard and the owner. With contemporary styling, she is designed for entertaining and socialising. Our favourite space is her main salon, opening to a large covered aft deck with lounge, seating areas and wet-bar. www.westportyachts.com



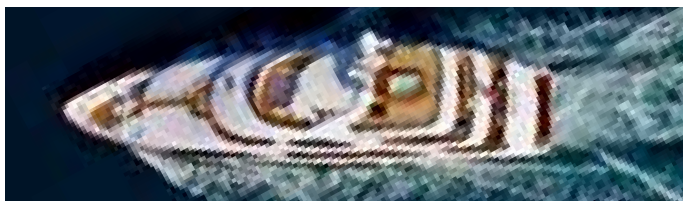
CARPE DIEM

Trinity Yachts Area: T09

This dramatically decorated 60-metre has contrasting dark macassar wood with soft white leathers inside. She is hosting the International Seakeepers Society Bal de la Mer on September 22. Read our full report on the yacht on page 72. www.trinityyachts.com

PRIMA *Palumbo Area: E06*

The first superyacht from a new shipbuilder definitely demands a visit at Monaco. Launched in June, the all-new 53.4-metre Columbus 177 is part of a new range from 38 to 75 metres with hulls designed by Sergio Cutolo. The yard is better known for repairs and recently acquired two shipyards in Malta, one of which refits superyachts. *Prima* is a classic-styled, full-displacement motor yacht, shown by Fraser. www.palumbo.it



TOLD U SO *Benetti Area: E13*

A 44-metre Benetti that has been styled by entrepreneur and owner of Molori Resorts Kirk Lazarus, who was so dissatisfied with the compromises aboard the yachts he was chartering, he designed his own perfect charter yacht. *Told U So* comes with the promise of unparalleled levels of service. www.molori.com

FIREFLY

Bloemsma Aluminiumbouw/Claasen Shipyards Area: T20

The first in a new series of F-class one-designs, the 35.2-metre *Firefly* combines the spirit of the J-class with the performance of a maxi-racer. The design brief was to create the smallest yacht that could beat a J on the water in both light and heavy winds; her long overhangs and sleek lines are magnificent. Her sweeping sheer with flush deck and is reminiscent of the 1930s The hull was completed by Claasen Shipyards. Shown by Hoek Brokerage. www.claasenshipyards.com



SATORI

Heesen Area: E09

The first of Heesen's new 50-metre all-aluminium semi-displacement class, her efficient hard-chine hull and attention to weight means she has delivered a top speed of 24 knots with an economical fuel consumption. Her striking interior is full of strong angles. www.heesenyachts.nl

HEMISPHERE

Pendennis Area: T31

The largest-ever sailing catamaran for luxury cruising at 44 metres, *Hemisphere* has a mast in excess of 50 metres. She is destined for luxury charter in tropical climates, with a shallow draught to access lagoons. She has a Pacific Rim-style décor inside. www.pendennis.com

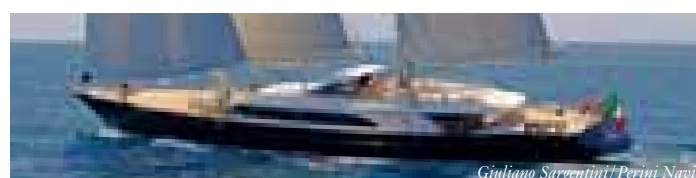


PAPI DU PAPI *ISA Area: C11*

This is a new custom project, combining the streamlined outline of ISA's 50-metre platform with the transom stairways of the 47-metre series. She is modern and sporty, with a stylish stern and a versatile beach area accessed from the swim platform by two wide curved glass doors. The interiors are by Francesco Paszkowski, his first with ISA. www.isayachts.com

NUMPTIA *Rossi Navi Area: N10*

Numptia will be one of a handful of 70-metre-plus yachts at the show. The features of this sybaritic yacht include a dedicated spa deck with gym, sauna, Turkish bath and massage room, and huge works of art. Shown by Burgess, her charter agent. www.rossinavi.it



FIDELIS *Perini Navi Area: T07*

Delivered in June, *Fidelis* is the tenth in this yard's successful 56-metre series. Designed by Perini Navi's in-house architects with Ron Holland, she boasts an ultra-light streamlined aluminium hull for excellent sailing performance as well as comfort. Her interior, from Perini Navi's team and Pro Design, includes maple and walnut woods. www.perininavi.it

Monaco Top 5 Brokerage Yachts

For owners who don't want a custom build, the best yachts for sale from yards around the world will be on display at Monaco. We've chosen our five favourites Frances & Michael Howarth



BIG FISH YCO

What is it? A true expedition yacht with a proven track record that saw her travel 35,000nm in her first year of operation.

Why is it so special? There are so many unusual and special features but perhaps most impressive is the extensive use of floor-to-ceiling windows, so that inside feels like outside. Throughout, *Big Fish* has a wonderful ambience, both at sea and in port.

Look out for: The display wall running the length of the central staircase, made up of 20 large flat screens which will display amazing photos from the year's cruising which includes Antarctica, the Amazon Basin, Galapagos Islands, and Panama.

Would appeal to: Adventurers and fashionistas: with stone decks, even high heels are no problem.

Data Builder: Aquos Yachts/McMullen and Wing. Year: 2010. LOA: 45.0m. Range: 7,000nm @ 11 knots. Exterior: Gregory C Marshall Naval Architect. Interior: Ann Morton. Guests: 12. Cabins: 6. Crew: 10. Contact: YCO. Website: www.ycoyacht.com

Asking Price: €26.5 million.

Other yachts offered: YCO will also be showing *Shooting Star*, a brand new 38-metre from Danish Yachts at €18.5 million (see page .

PEGASO Fraser Yachts

What is it? So new we can hardly believe her proud owner can bear to part with her so soon. She is truly an ocean-going SUV, designed for an experienced owner who wants to travel the oceans of the world. She's pictured below in July after final outfitting in Vigo.

Why is it so special? This is a yacht designed to be at home on the Costa Azul, ploughing around the Cape of Good Hope, or exploring the Antarctic drift. Of course, this is also an ice class yacht with dynamic positioning, helipad, submarine and multiple tenders. She is much more than a floating hotel and has been designed to keep guests and crew healthy and happy on long voyages. On board are a hospital and laboratory, with wet lab and film production centre for editing footage.

Look out for: The 13-metre wide garage, housing a five-person submarine, 9.1-metre submarine dive and support tender and Goldfish diesel RIB (plus four jPWSs and recompression chamber). Two additional Pascoe tenders are stored on the foredeck.

Would appeal to: An owner who wants to go anywhere but does not want a typical blue-hulled, butch boat.

Data Builder: Freire Shipyard. Year: 2011. LOA: 73.6m. Range: 10,000nm @ 14 knots. Exterior: H2 Yacht Design/Andrew Moore. Interior: Mark Berryman Design/Steve Howard. Guests: 12. Crew: 27. Contact: Fraser Yachts. Website: www.fraseryachts.com

Asking price: €85 million.

Other yachts offered: Fraser's yachts on show at this year's show include *Prima*, *Columbus 177*, *Aurora Dignitatis*, *My Trust* and *Nomade*.



Javier Alonso / The YachtPhoto.com



CAKEWALK

Burgess

What is it? The largest yacht built in the USA since the 1930s and the largest yacht at the show. Impressive, gracious and grand, she embodies the best of contemporary American design and craftsmanship.

Why is it so special? With metres to play with there is plenty of space for all six same-sized guest cabins to be on the main deck. The master suite has its own deck with large private saloon. The interior is rich and classic reminiscent of a grand house, with coffered ceilings, bookmatched stone, high-gloss wood, grand piano and a fireplace in the main saloon.

Look out for: The toy garage, called 'the Boathouse', which houses three custom tenders in special cradles: a classic Riva Limited Edition Aquariva 100 Cento, an Intrepid Custom 350 Open and a Vikal limo tender.

Would appeal to: Someone who wants to own a truly grand American yacht.

Data Builder: Derecktor. Year: 2010. LOA: 85.6m. Range: 5,000nm @ 15 knots. Exterior: Tim Heywood Designs. Interior: Dalton Designs. Guests: 12. Cabins: 7. Crew: 24. Contact: Burgess.

Website: www.burgessyachts.com **Asking price:** POA.

Other yachts offered: Burgess have motor yachts *Lady Trudy III*, *Numptia*, *Excellence III*, *Sunrise* and *E&E* plus the sailing yacht *Klosters* for sale and at the show.



DRIZZLE

Camper & Nicholsons

What is it? Built as *Twizzle* for experienced yacht owners who used her to cruise around the world, she was renamed and refitted *Drizzle* by her new owners.

Why is it so special? Designed as a family holiday home rather than a yacht, she has stood the test of time. Justin Whitelely was responsible for the layout while the interior has a soft-coloured, tranquil theme.

Look out for: Her wealth of concealed hi-tech features including a glass bridge.

Would appeal to: An owner new to the industry and wants a build by an experienced yachtsman.

Data Builder: Feadship De Vries. Year: 2005. LOA: 55.0m. Range: 4,800nm @ 12.5 knots. Exterior: De Voogt. Interior: Redman Whiteley Dixon/Todhunter Earle. Guests: 10. Cabins: 5. Crew: 14. Contact: Camper & Nicholsons.

Website: www.camperandnicholsons.com

Asking price: €46.95 million.

Other yachts offered: Camper & Nicholsons plans to show six other yachts including *Blue Eyes*, *Sofita*, *Clear Eyes*, *TJ Esperanza* and *Marflow*.



Ed Holt

METEOR

YPI

What is it? An award-winning two-masted, clipper-bowed schooner-rigged sailing yacht. She may have that golden era look, but she was only launched in 2007. The brief was for a graceful but seaworthy vessel.

Why is it so special? She won St. Barths Bucket in 2009 against a fleet of 35 sailing entries: even more impressive given that the design brief called for handling and safety to take priority over performance.

Look out for: Beautiful Honduran swietenia mahogany joinery in the classical interior, and the unmissable skylight in the main saloon that extends above deck.

Would appeal to: A racing owner who wants a classic yacht without the maintenance of an old boat.

Data Builder: Royal Huisman. Year: 2007. LOA: 51.6m. Exterior: Gerard Dijkstra & Partners/John G. Alden Design. Interior: John Munford Design. Guests: 6. Cabins: 3. Crew: 12. Contact: YPI.

Website: www.ypigroup.com

Asking price: €25 million.

Other yachts offered: Confirmed yachts include *Valquest*, *Jasmin*, *Mary-Jean II*, *Sofico* and *Lionheart*.

